

MARYCROFT
HOMES™

Open to compare our
*4-bedroom and
5-bedroom options.*

MARYCROFTHOMES.COM

JUNIPER

SERIES 45

4 OR 5 BEDROOMS + 4.5 BATHS

ELEVATION A | 3,161 SQ. FT.

ELEVATION B | 3,173 SQ. FT.

ELEVATION C | 3,178 SQ. FT.



THE VALLEY

WOODBIDGE

MARYCROFT
HOMES™

JUNIPER

MODEL 45-2

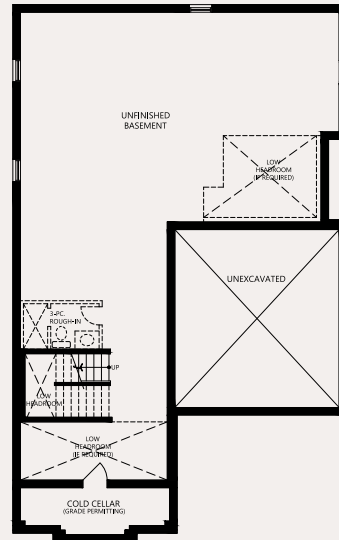
4 OR 5 BEDROOMS + 4.5 BATHS

Inquire with sales office or use our webtools to learn more about the following:

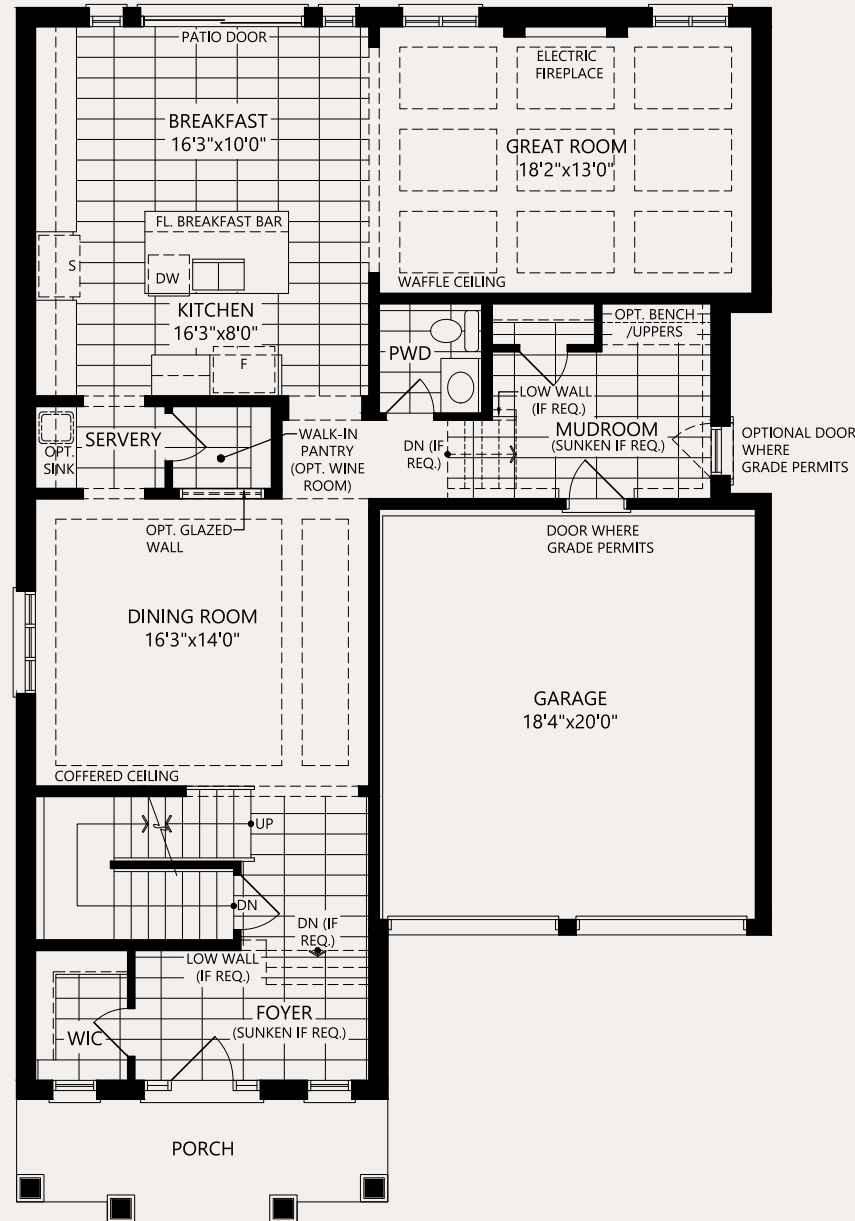
- * Partials - Elevation B - 4/5 Bed
- * Partials - Elevation C - 4/5 Bed
- * Optional Service Stairs - A/B/C
- * Rear Walk-Up Basement - A/B/C
- ** Rear Walk-Out Basement - A/B/C
- ** Rear Walk-Out Deck Condition - A/B/C

* MUST BE ORDERED AT TIME OF SALE
 ** DETERMINED BY SITING AND GRADING

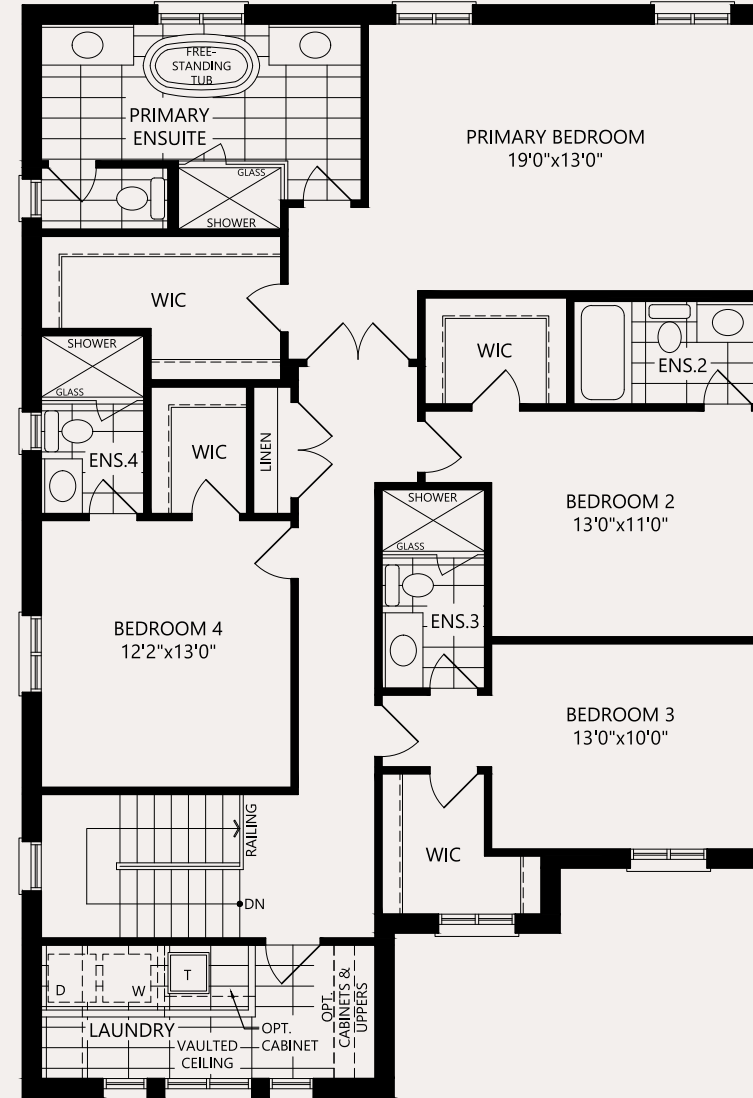
BASEMENT



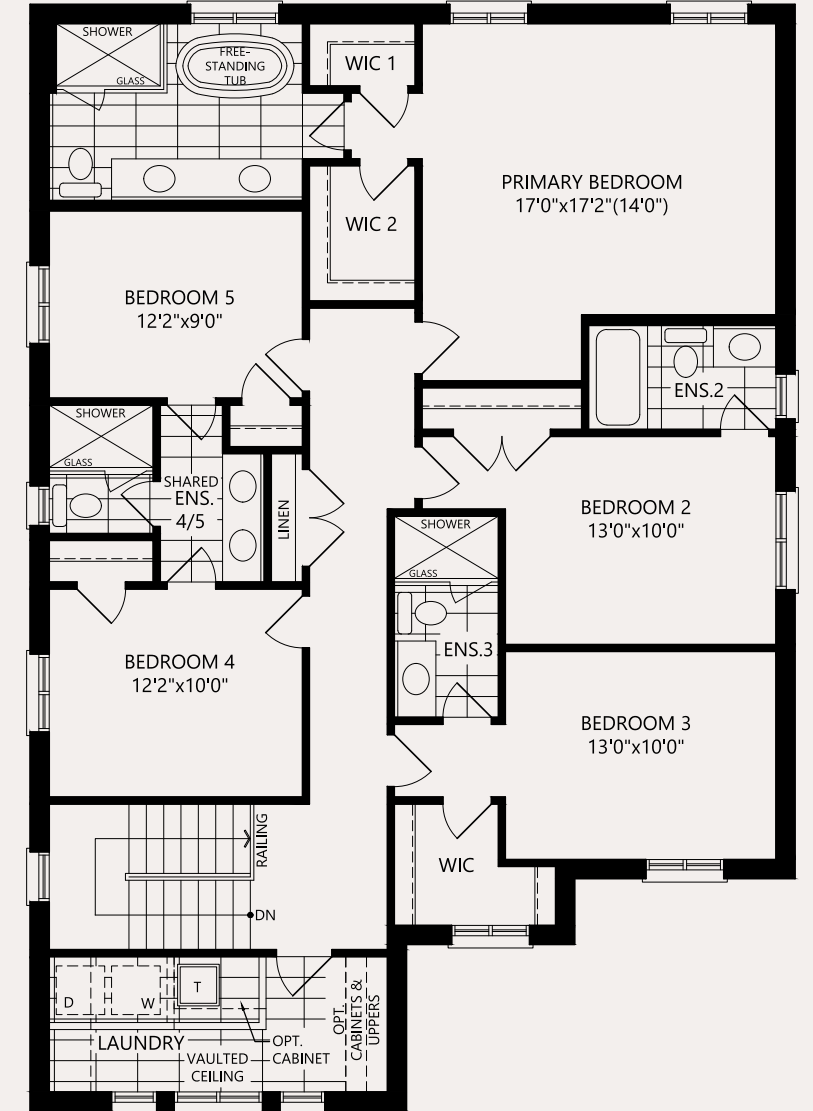
MAIN FLOOR



SECOND LEVEL - 4 BEDROOM



SECOND LEVEL - 5 BEDROOM



Elevations: Not all variations are represented in marketing materials. Floorplans: Only Elevation A floorplan version is represented in marketing materials. Please refer to Schedule Y of the Agreement of Purchase and Sale for the floorplan/room dimensions/partial features that apply to the home purchased. Plans, measurements, and specifications are approximate and subject to change without notice. Tile orientation is ARTIST'S concept and subject to change without notice - consult Designer at time of colour selections with special requests. Actual usable floor space may vary from the stated floor area. All renderings are Artist's Concept. E. & O. E.